

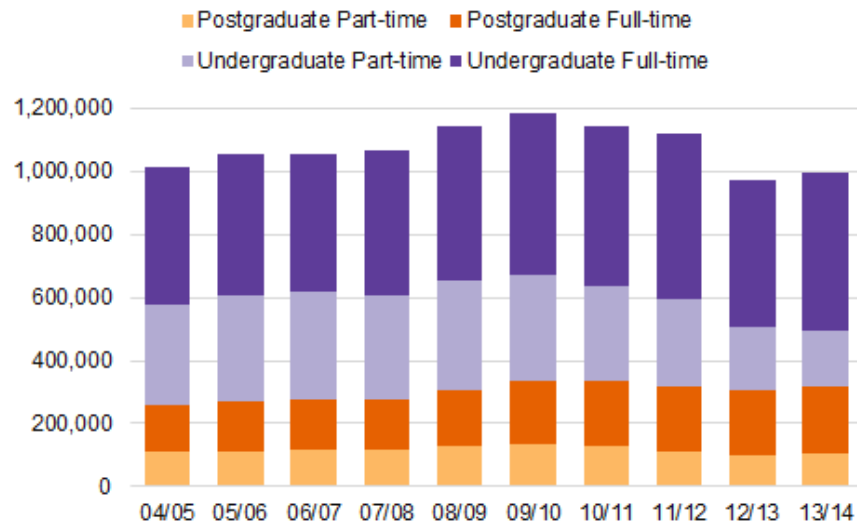
An overview of Higher Education in the UK



With UK, EU and
Non-EU students

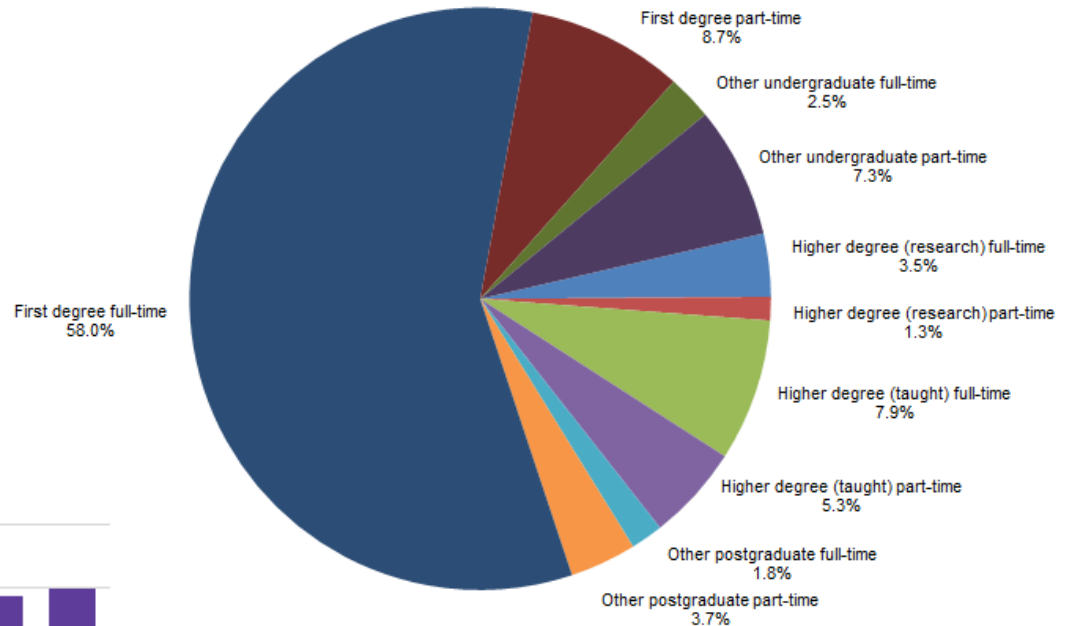
Students in Higher Education in the UK with University & Colleges break up

First year students by level and mode of study



Source: HESA Studentrecord

Percentages in this chart have been rounded to one decimal place, therefore they may not sum exactly to 100%.



HE students by level and mode of study (2013/2014)

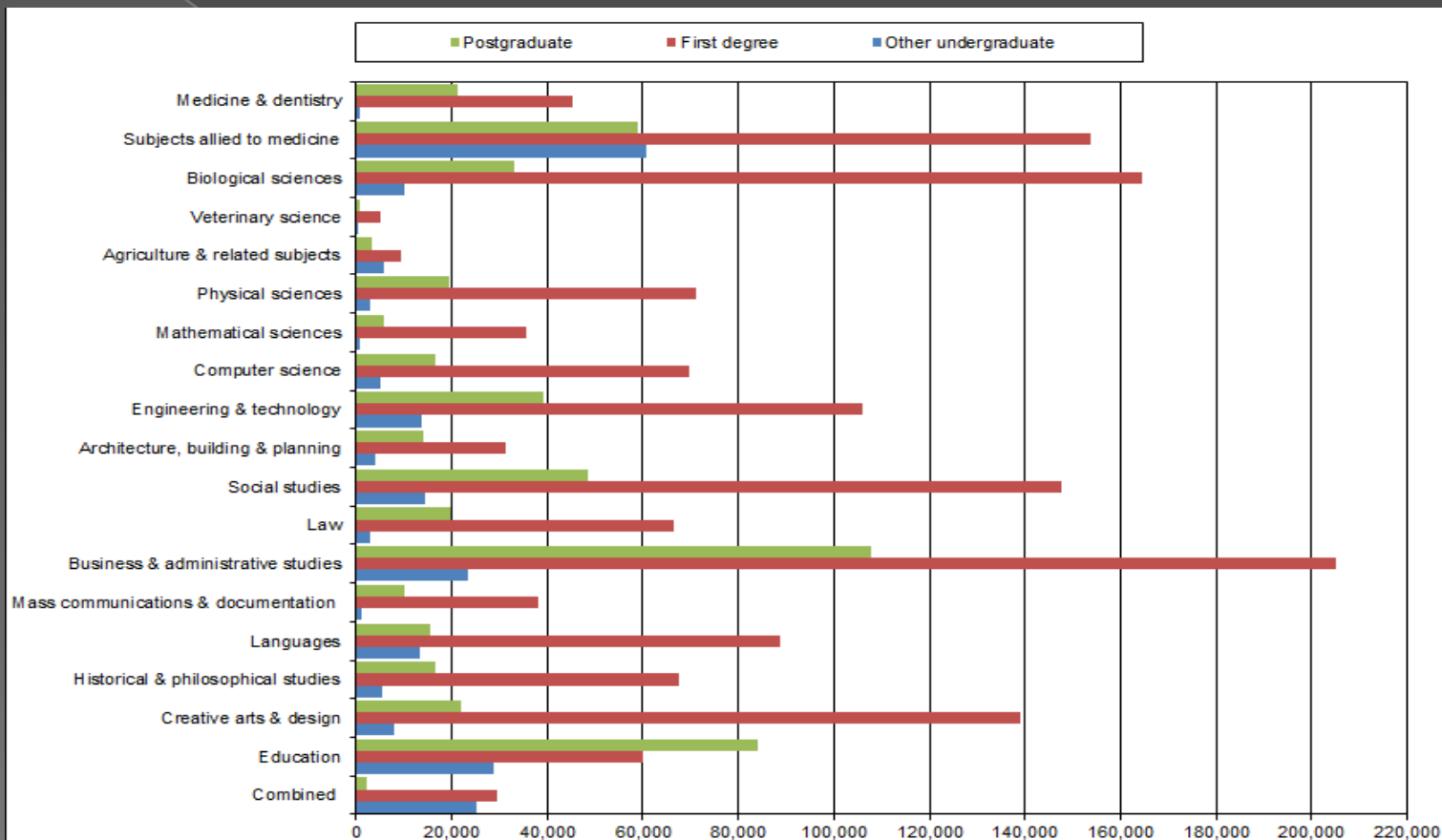
Students by level of study

2000/01 to 2013/14

Year	Undergraduate	Postgraduate	Total
2013/14	1759915	539440	2299355
2012/13	1803840	536440	2340275
2011/12	1928140	568505	2496645
2010/11	1912580	588720	2501295
2009/10	1914710	578705	2493415
2008/09	1859240	536810	2396050
2007/08	1804970	501135	2306105
2006/07	1801955	502745	2304700
2005/06	1788600	492640	2281235
2004/05	1753930	482335	2236265
2003/04	1722685	477495	2200175
2002/03	1676920	454190	2131110
2001/02	1615130	427455	2042580
2000/01	1541225	406905	1948135

	Undergraduate	Postgraduate	Total
Full-time Female	762065	162470	924530
Full-time Male	629410	141925	771340
Full-time Total	1391585	304445	1696030
Part-time Female	225830	138730	364560
Part-time Male	142480	96220	238695
Part-time Total	368335	234995	603325
Total Female	987895	301195	1289090
Total Male	771890	238145	1010035
Total	<u>1759915</u>	<u>539440</u>	<u>2299355</u>

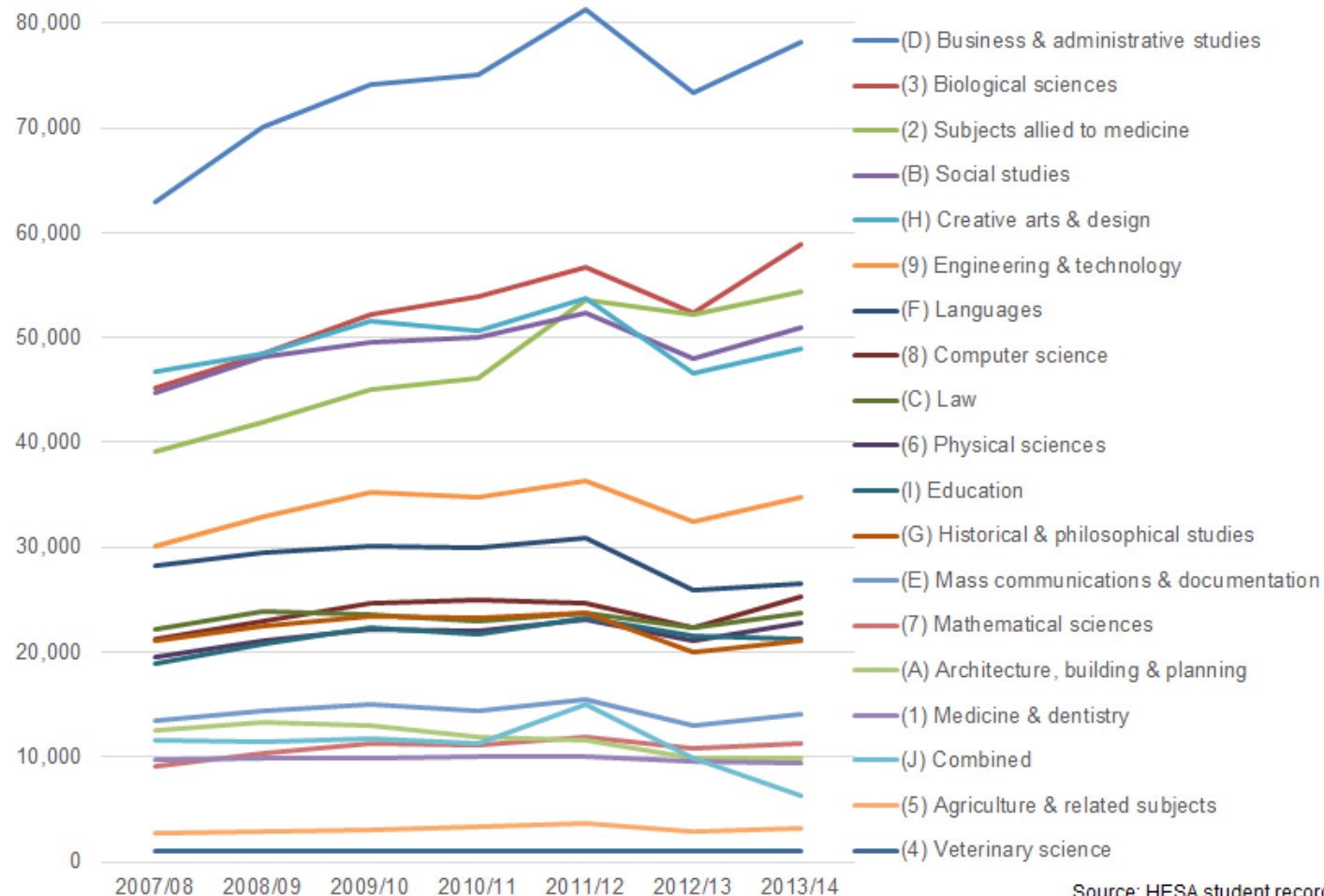
The most popular programs



** Analyses of subject information show Full-person equivalent (FPE). These are derived by splitting student instances between the different subjects that make up their course aim.

© Higher Education Statistics Agency Limited 2015

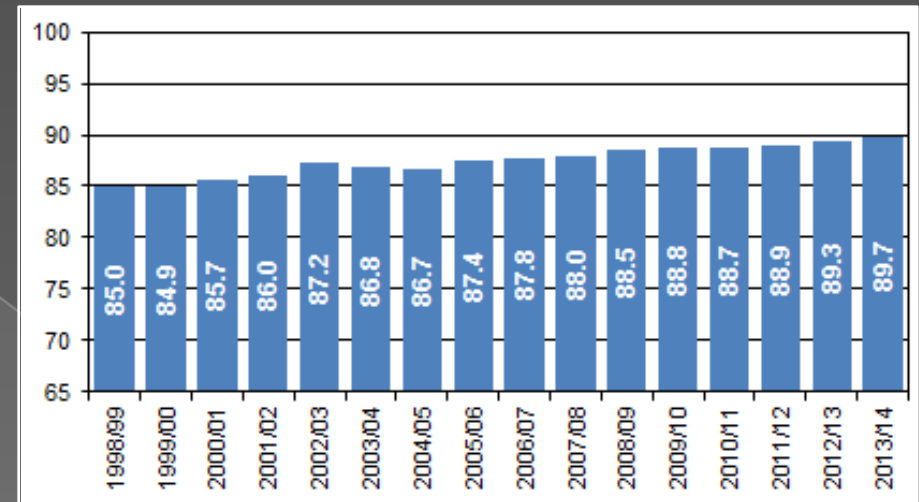
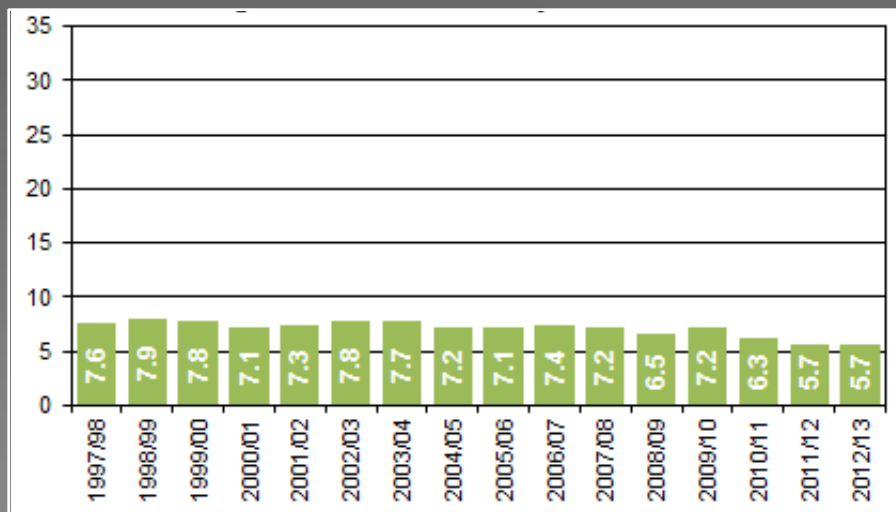
HE students by subject area and level of study (2013/2014)



First year first degree students
by subject area 2007/08 to 2013/14

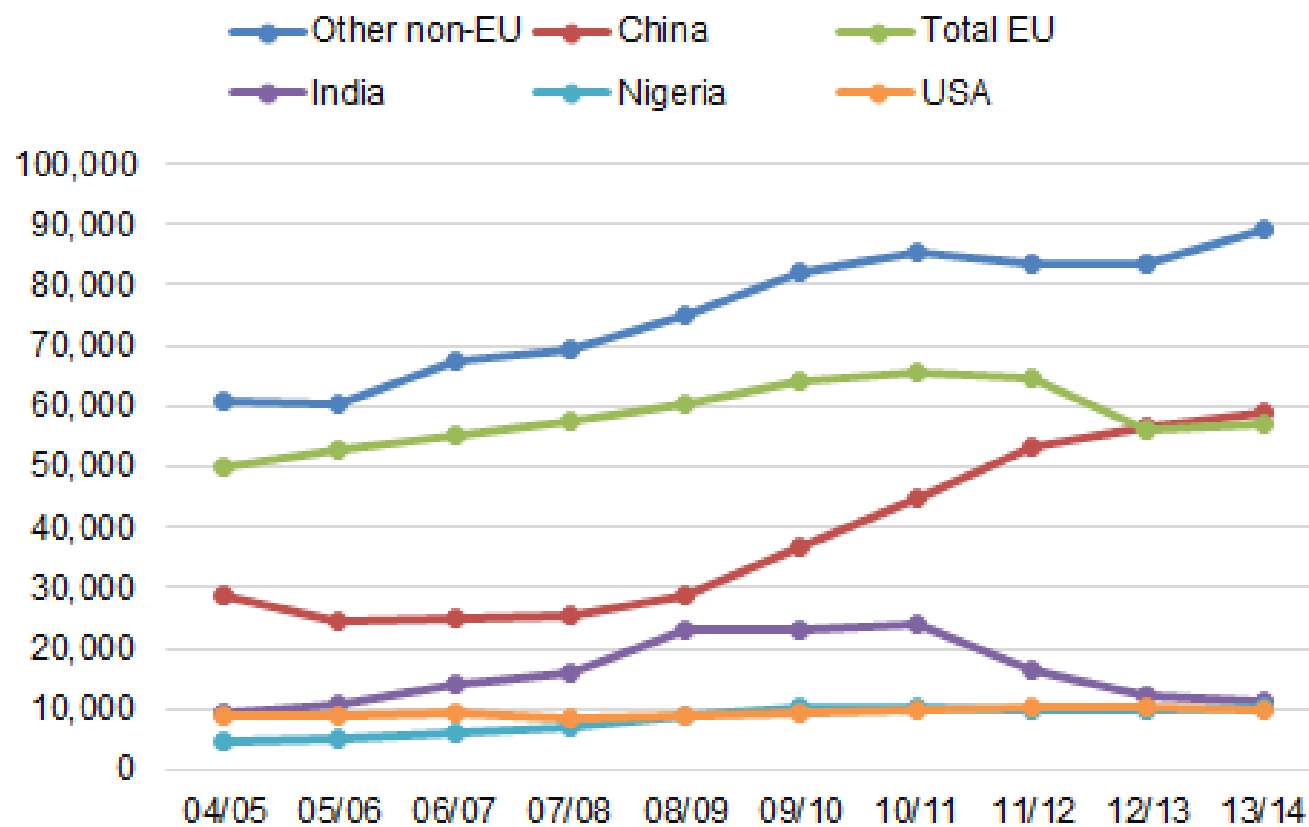
% of EU students in UK Institutions Countrywise

Percentage of UK domicile young full-time first degree entrants from state schools 1998/99 to 2013/14



Percentage of UK domicile young full-time first degree entrants not continuing in HE after their first year 1997/98 to 2013/14

Non-UK domicile students



Source: HESA Studentrecord

First year Non-UK
domicile students

Regions of Non-UK domicile

Region of domicile	2012/13	2013/14
Other European Union	125.290	125.300
Other Europe	18.610	19.525
Africa	34.160	35.095
Asia	186.545	192.540
Australasia	2.505	2.580
Middle East	26.380	27.520
North America	26.920	27.340
South America	4.345	5.310
Non-EU Union unknown	505	285
Total non-UK domicile	425.265	435.495

Country	2012-13	2013-14
China	83.790	87.895
India	22.385	19.750
Nigeria	17.395	18.020
Malaysia	15.015	16.635
USA	16.235	16.485
Hong Kong	13.065	14.725
Saudi Arabia	9.440	9.060
Singapore	6.020	6.790
Pakistan	7.185	6.665
Canada	6.190	6.350

Top Non-EU sending countries

By which countries do EU students come from?

Country	2012-13	2013-14
Germany	14,520	14,060
France	11,725	11,500
Republic of Ireland	12,620	11,490
Greece	10,910	10,670
Cyprus	10,840	10,295
Italy	8,320	9,550
Spain	5,995	6,585
Romania	6,460	6,515
Bulgaria	6,060	6,355
Poland	5,280	5,200

Top EU
sending countries

Which subjects do these students want to study?

Subject of study	% in subject
Business & administrative studies	38.7%
Engineering and technology	32.7%
Social studies	25.0%
Architecture, building and planning	24.4%
Mass communications & documentation	21.9%
Mathematical sciences	20.9%
Computer science	20.5%
Creative arts and design	19.2%
Biological sciences	19.0%
Languages	17.7%
Medicine & dentistry	15.7%
Veterinary sciences	15.6%
Physical sciences	15.1%
Law	12.7%
Agriculture and related subjects	10.3%
Historical and philosophical studies	10.2%
Subjects allied to medicine	7.8%
Education	6%
Combined	5.2%

EU student numbers
by subject area
(2013/2014)

Why do EU students choose UK?

- ❖ A popular destination
- ❖ Get involved
- ❖ A sporting life
- ❖ Clubs and societies
- ❖ Support activities
- ❖ British student culture
- ❖ A unique student scene

*Thanks for
your
attention!*